



BENSON POLYTECHNIC HIGH SCHOOL | COMMUNITY DESIGN WORKSHOP 2

PORTLAND PUBLIC SCHOOLS APRIL 2, 2016



AGENDA

Benson Polytechnic High School Community Design Workshop 2

- 9:00am Welcome & Logistics
- 9:10am Guiding Principles Review
- 9:30 am Area Program Review
Comprehensive HS Area
CTE Program Area
- 10:00am Benson Polytechnic HS Master Plan Design Charette
Historical Context
Existing Building Elements to Remain?
Small Group Work - Develop Master Plan Concepts
Gallery Walk
- 11:00am Roundtable Sessions
Sustainability
Challenges & Opportunities of Integrating General Ed and CTE Facilities
Next Generation Learning Spaces - Inspiration and Concerns
Partnerships - How will these work?
- 11:50am Conclusions & Next Steps

GUIDING PRINCIPLES

HONOR THE UNIQUE HISTORY AND CULTURE OF BENSON POLYTECHNIC HIGH SCHOOL:

Benson Polytechnic High School students, staff and community are proud of the school's rich history extending over 100 years. The modernization of this historic facility presents an opportunity to honor the past while embracing the future. The renovated facility will retain the historic character of the stately school, yet be entirely modern in its approach to delivering integrated academic and career technical education and opportunities to students.



GUIDING PRINCIPLES

ENGAGE WITH THE LOCAL BUSINESS, GOVERNMENT AND POSTSECONDARY PARTNERS TO CREATE A STRONG CONNECTION BETWEEN EDUCATION AND INDUSTRY:

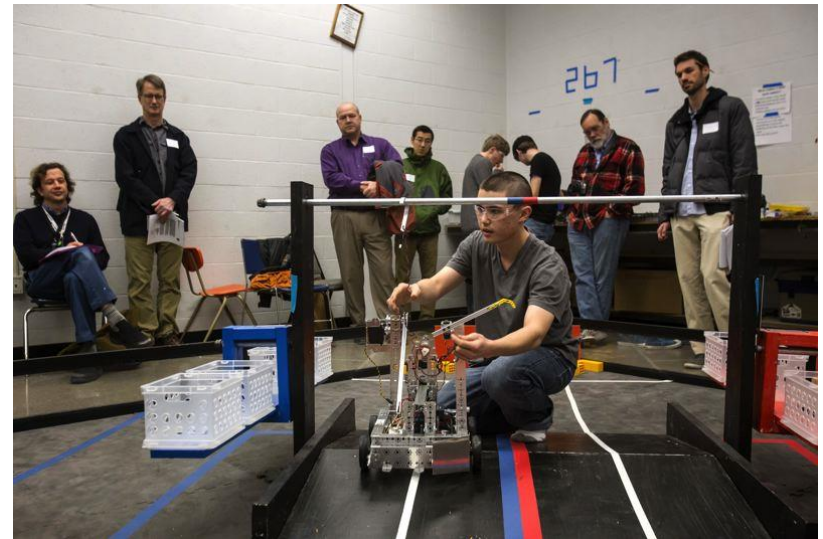
Benson Polytechnic High School's programs should support reciprocal partnerships with industry, government, and postsecondary education, linking educational content to real-life applications and providing career relevance. Industry and postsecondary connections enhance career pathways, strengthening the connection between course content and career goals. Benson Tech's CTE spaces should be designed to mimic real-world work environments, reflect industry needs and meet applicable certification requirements.



GUIDING PRINCIPLES

PROVIDE HANDS-ON, PROJECT-BASED LEARNING OPPORTUNITIES THAT ARE IMBUED WITH RIGOR AND RELEVANCY:

Benson Tech’s modernized facility will include spaces designed to accommodate hands-on, problem-based learning activities, providing students with access to state of the art & industry-standard tools, materials, equipment, and technology to support an investigative mindset. Benson Tech should ignite a passion for “learning by doing” through experiential learning opportunities. These approaches will help students understand the relevancy of core content to their future career paths, allowing students to conceptualize the real world application of abstract academic concepts.



GUIDING PRINCIPLES

PROVIDE AGILE, FLEXIBLE AND ADAPTABLE FACILITIES THAT SUPPORT CHANGING EDUCATIONAL AND INDUSTRY NEEDS

Benson Tech's modernized facility must be designed as adaptable to changing needs based on economic shifts, industry advances, and new equipment needs.

Classrooms and other learning areas should serve as flexible spaces that can be easily reconfigured to support different instructional approaches. School spaces should encourage collaboration by offering a variety of group settings with flexible furnishings to invite interaction. These areas should be designed as open and inviting spaces that draw students in and serve as centers of activity and discussion.



GUIDING PRINCIPLES

CELEBRATE DIVERSITY AND PROVIDE A SENSE OF INCLUSION AND BELONGING AMONG STUDENTS AND FAMILIES

Benson Polytechnic High School is enriched and strengthened by the diversity of students, parents, teachers and staff. Benson Tech's school environment should reflect an appreciation of different cultures, socioeconomic backgrounds, and learning modalities. Benson Tech should promote socioeconomic equity among students by ensuring that all students have access to the resources needed to succeed in their educational and career goals.



GUIDING PRINCIPLES

POSITION BENSON POLYTECHNIC AS THE NATIONAL MODEL FOR STEAM AND CAREER TECHNICAL EDUCATION

Benson Polytechnic High School aspires to become a nationally-recognized institution that integrates career technical education and STEAM instruction. Students, alumni, business and the community should feel a sense of pride when speaking of their school's exemplary programs and innovative learning approaches.



GUIDING PRINCIPLES

PROVIDE LEARNING ENVIRONMENTS THAT INSPIRE CREATIVITY AND COLLABORATION AMONG STUDENTS

Benson Tech’s modernized facility should include spaces and features that inspire exploration, collaboration and creativity, and open up a world of possibilities to students. Benson Tech’s modernized facility should include multisensory environments that inspire students to explore, design, create and “tell their stories”.



GUIDING PRINCIPLES

SUPPORT A COMPREHENSIVE EDUCATIONAL EXPERIENCE FOR STUDENTS

Benson Polytechnic High School strives to provide a comprehensive educational and cultural experience for students. Benson Tech's campus should include sufficient onsite resources to allow students to conveniently access school-based sports and/or performing & fine arts programs. Students' educational experiences are bolstered through their participation in expanded elective courses and extracurricular opportunities.



AREA PROGRAM

PROGRAM AREA	Ed Spec V2.6		BPHS Existing Program		BPHS Proposed Program		Delta for Reuse NSF
	#	NSF	#	NSF	#	NSF	
CORE ACADEMIC PROGRAMS							
General Education Classrooms <i>(English, Math, Social Studies, Health & World Language)</i>	41	40,180 <i>(980 SF Each)</i>	23	16,599 <i>(706 avg. SF Each)</i>	37	33,300 <i>(900 SF Each)</i>	
Science Classrooms (includes prep & chem stor)	11	16,500	6	7,048	11	16,500	
Extended Learning Areas		8,000		-		8,000	
TOTAL: CORE ACADEMIC PROGRAMS	52	64,680	29	23,647	48	57,800	
CAREER TECHNICAL EDUCATION (CTE)							
General CTE	3	6,000					
Construction POS			3	8,266	2	13,300	
Electrical POS			3	8,263	3	7,300	
Architecture POS			3	3,397	3	5,100	
Digital Media POS			2	6,994	4	11,150	
Applied Arts POS			Included in Fine & Performing Arts				
Radio POS			2	5,182	2	4,790	
CTE Education POS			-	-	2	2,620	
Health Services POS			7	7,899	8	12,100	
Computer Science POS			3	7,998	3	8,550	
Manufacturing POS			2	30,859	3	25,400	
Engineering POS			-	-	3	6,800	
Auto/Transportation Technology POS			5	29,001	5	26,830	
TOTAL: CAREER TECHNICAL EDUCATION	3	6,000	30	107,859	38	123,940	

AREA PROGRAM

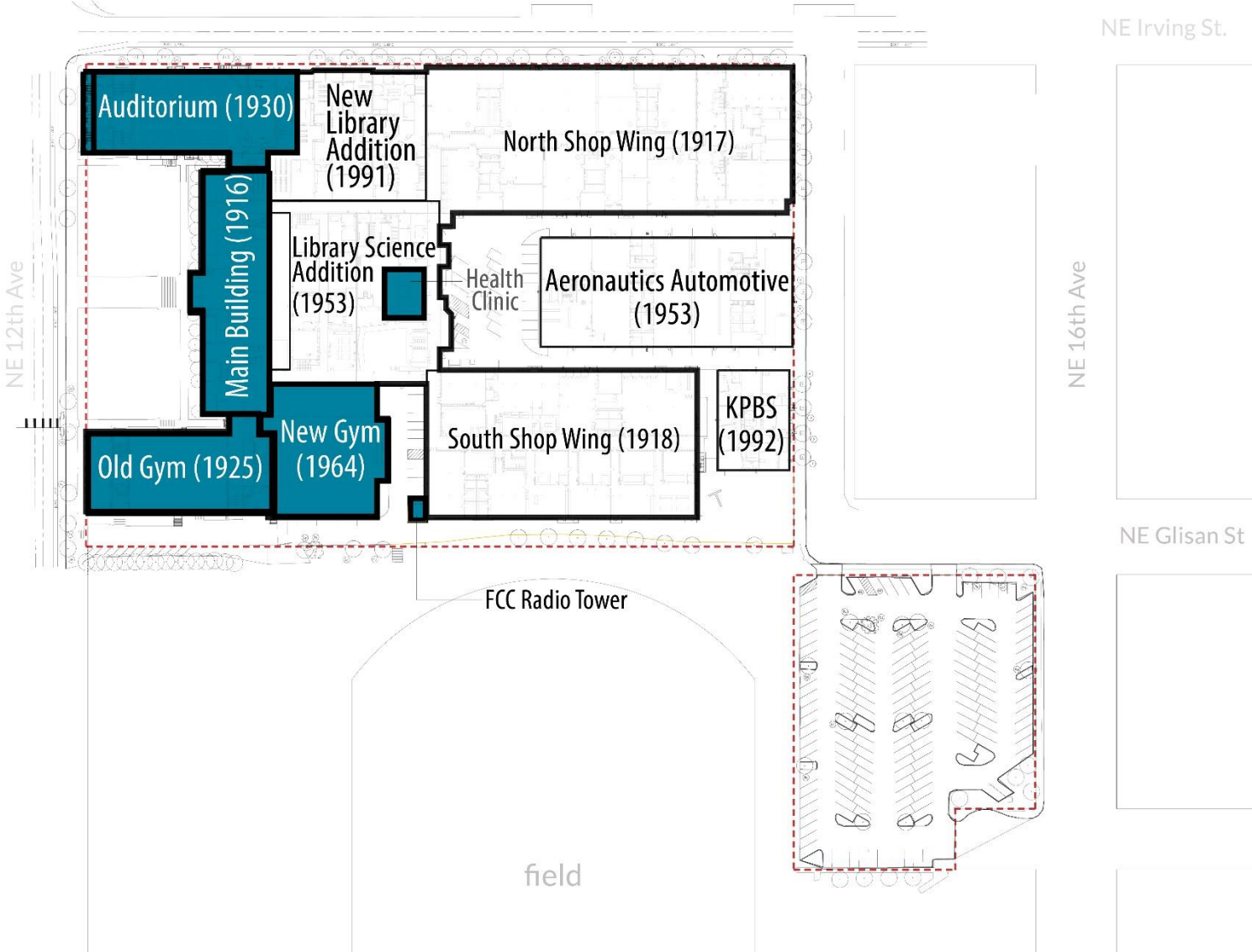
PROGRAM AREA	Ed Spec V2.6		BPHS Existing Program		BPHS Proposed Program		Delta for Reuse NSF
	#	NSF	#	NSF	#	NSF	
FINE & PERFORMING ARTS							
Fine & Visual Arts	2	3,080	2	1,939	2	3,080	
Band/Orchestra	1	3,470	-	-	1	3,470	
Choir		200	-	-	-	-	
Theater/Dance	1	14,600	-	17,284	1	18,884	4,284
TOTAL: FINE & PERFORMING ARTS	4	21,350	2	19,223	4	25,434	
PHYSICAL EDUCATION/ATHLETICS							
Physical Education/Athletics	3	35,580	3	55,172	3	55,172	19,592
TOTAL: PHYSICAL EDUCATION/ATHLETICS	3	35,580	3	55,172	3	55,172	
EDUCATIONAL SUPPORT							
Administration		15,260		10,920		15,260	
Counseling/Career		2,735		3,149		2,735	
Student Activities		270		-		270	
Technology Access		5,500		-		5,500	
Special Ed (SPED)		5,900		1,376		5,900	
Emerging Language Learning (ELL)	1	800		-	1	800	
Student Center		12,620		20,075		12,620	
Media Center/Library		10,220		10,126		10,220	
Student Space		200		-		200	
Custodial		3,850		1,949		3,850	
Building Support		10,045		4,249		10,045	
TOTAL: EDUCATIONAL SUPPORT	1	67,400		51,844	1	67,400	

AREA PROGRAM

PROGRAM AREA	Ed Spec V2.6		BPHS Existing Program		BPHS Proposed Program		Delta for Reuse NSF
	#	NSF	#	NSF	#	NSF	
SMALL INSTRUCTIONAL SPACES							
Small Instructional Spaces	10	5,000	-	-	10	5,000	
TOTAL: SMALL INSTRUCTIONAL SPACES	10	5,000			10	5,000	
PARTNER & COMMUNITY USES							
Clothing/Food Closet		1,200	-	-		1,200	
TOTAL: PARTNER & COMMUNITY USES		1,200				1,200	
WRAP AROUND SERVICE PROVIDERS							
Health Clinic		1,600		1,333		1,600	
Teen Parent Services		2,100		-		2,100	
Alternate Program				19,150			
Classrooms		1,000		-		1,000	
TOTAL: WRAP AROUND SERVICE PROVIDERS		4,700		20,483		4,700	
TOTAL ASSIGNABLE SQUARE FOOTAGE	70	205,910	64	278,229	104	340,646	23,876
Subtotal - Unassignable Area	36%	74,128	40.5%	112,771	36%	121,589	
TOTAL BUILDING GROSS SQUARE FOOTAGE		280,038		391,000		463,279	

Banfield I-84

NE Irving St.



NE Glisan St

NE 16th Ave

NE Glisan St

NE Flanders St

FCC Radio Tower

field

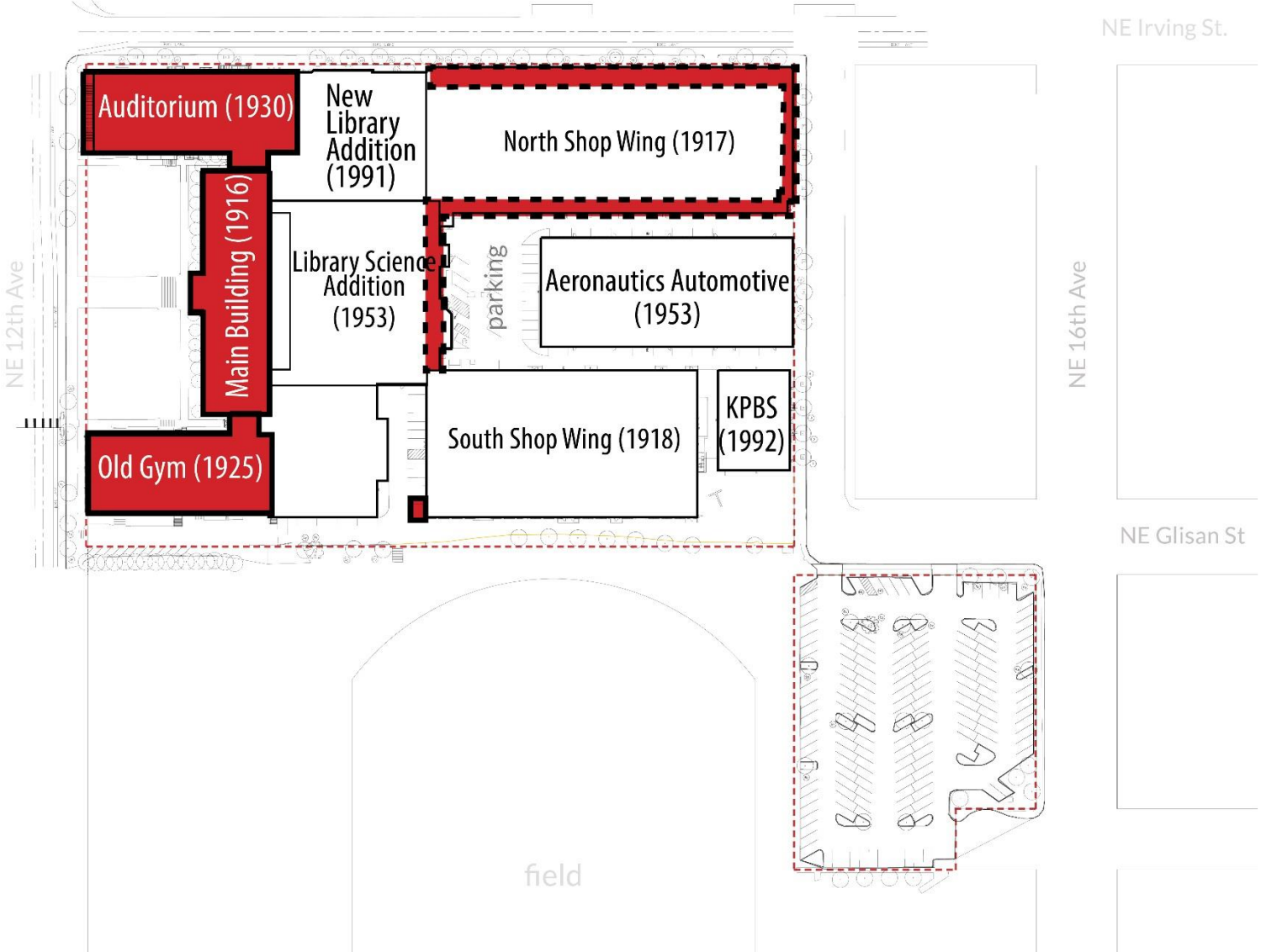


EXISTING BUILDINGS TO REMAIN



Banfield I-84

-  HIGH HISTORIC SIGNIFICANCE
-  MEDIUM HISTORIC SIGNIFICANCE



NE Glisan St

NE Irving St.

NE 16th Ave

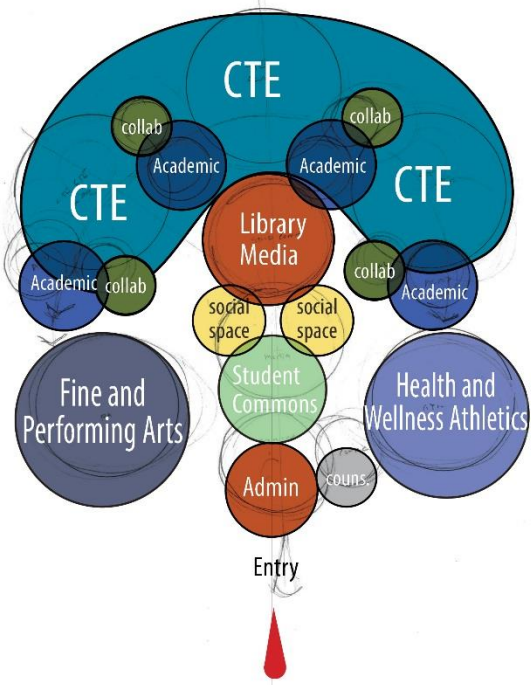
NE Glisan St

NE Flanders St

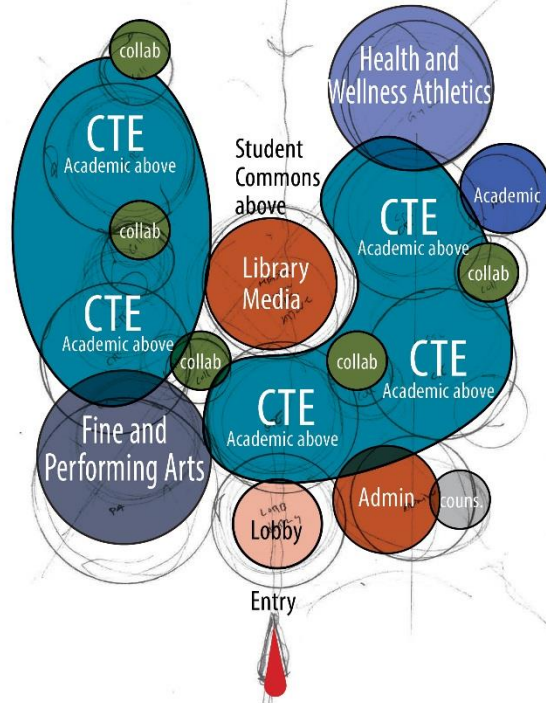
field



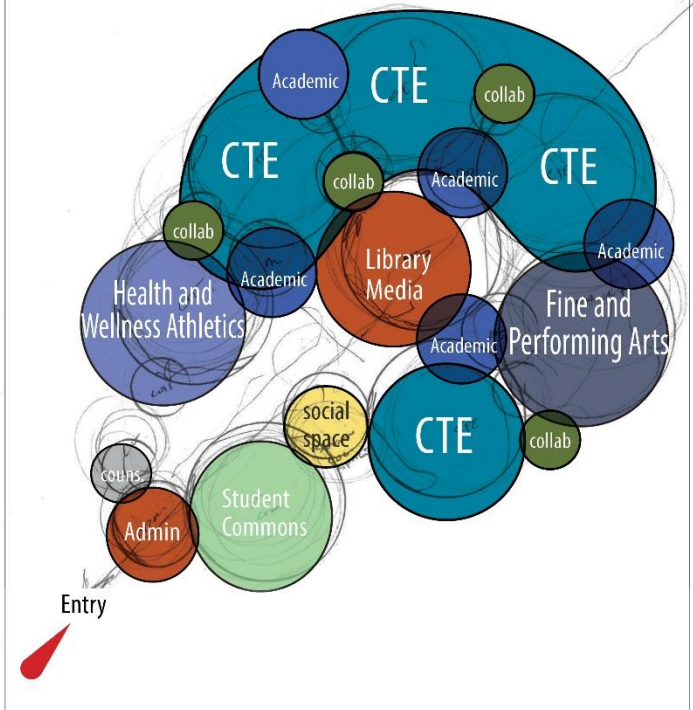
HISTORICAL CONTEXT



Concept diagram 01



Concept diagram 02



Concept diagram 03

Community Workshop – Committee Impressions

- Integrated academic with CTE, disbursed collaboration spaces
- Pod clusters that contain academic, CTE, collaboration areas, social spaces
- Concern about pod approach causing long travel distance between academic classes
- Use of green spaces as a compliment to academic/school environment

- Common idea of Health Occ adjacent to PE/Wellness; also would be nice to have Health Occ near other CTE programs
- Display windows on Irving Street – great idea, showcases the programs (11k-12k cars per day)
- Defined front door / back door concept is a good idea
- Grouping of public spaces at front of the building is a good concept (public spaces up front, private spaces in back)

Banfield I-84

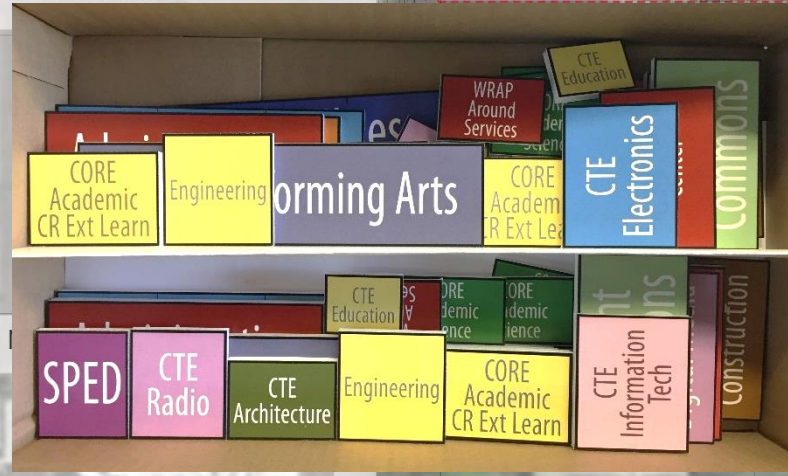
NE Irving St.

NE 12th Ave

NE 16th Ave

NE Glisan St

NE Glisan St



ROUNDTABLE SESSIONS - SUSTAINABILITY

STATION 1

- What should be our priorities for implementation of sustainability measures in the reimagined Benson Tech?
- What are some considerations to keep in mind?

ROUNDTABLE SESSIONS – PROGRAM INTEGRATION

STATION 2

- What CTE & General Education programs lend themselves to integration?
- What are challenges and opportunities of integrating CTE spaces with General Education spaces?

ROUNDTABLE SESSIONS – NEXT GENERATION LEARNING SPACES

STATION 3

Inspiration

Things you like

Things next generation learners need

Concerns

Things you don't like

Things that don't feel like Benson Tech

ROUNDTABLE SESSIONS – PARTNERSHIPS

STATION 4

- What are some potential partnerships we should consider when planning space for Benson Tech?
- What program opportunities would benefit from partners?
- What are some examples we can draw from (either in high schools, colleges or industry)?

NEXT STEPS

- Community Open House: TBD

